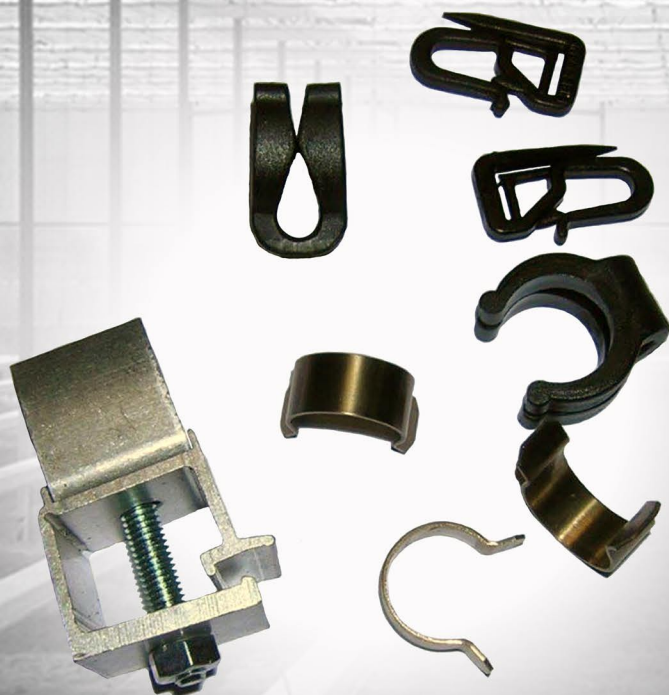


COMPONENTI PER
OMBREGGIAMENTO
E COIBENTAZIONE

SHADING COMPONENTS
AND ENERGY SAVING
SYSTEM

MATERIAL PARA
PANTALLA



VIALE SISTEMI®

PRODOTTI TESSILI / TEXTILES / PANTALLA ecoscreen



**ECOSCREEN
ES10** **530 cm**
 larghezza/width/latitud* \approx **20 %** \approx **47 %**



**ECOSCREEN
ES15** **530 cm**
 larghezza/width/latitud* \approx **54 %** \approx **57 %**



**ECOSCREEN
ES16** **530 cm**
 larghezza/width/latitud* \approx **70 %** \approx **65 %**



**ECOSCREEN
ES17** **530 cm**
 larghezza/width/latitud* \approx **80 %** \approx **70 %**



**ECOSCREEN
ES15 OPEN** **530 cm**
 larghezza/width/latitud* \approx **53 %** \approx **20 %**



**ECOSCREEN
ES16 OPEN** **530 cm**
 larghezza/width/latitud* \approx **54 %** \approx **20 %**

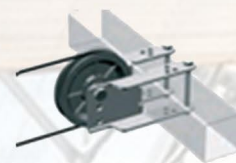


CARRUCOLA / PULLEY / POLEA



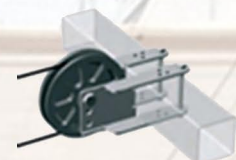
- CARRUCOLA PER CAVO 90UF con staffa 50x50
- CABLE PULLEY 90UF bracket 50x50
- POLEA PARA CABLE con placa 90UF 50x50

25
pz/pcs



- CARRUCOLA PER CAVO 100UF con staffa 50x50
- CABLE PULLEY 100UF bracket 50x50
- POLEA PARA CABLE con placa 100UF 50x50

25
pz/pcs



- CARRUCOLINE CON GANCIO 40
- PULLEY WITH HOOK 40
- POLEA CON GANCIO 40

100
pz/pcs



CLIPS



- CLIPS ALLUMINIO $\varnothing 19$ + CLIP ALLUMINIO TRAZIONE 26 mm
- ALUMINIUM CLAMP SET
- CLIPS ALUMINIO $\varnothing 19$ + CLIP ALUMINIO TRACCION 26 mm

100
pz/pcs



- CLIP EXT PER TRAZIONE A CAVO 19
- LEAD EDGE CABLE CLIP 19 EXT. VERSION
- CLIP PARA TRACCION CABLE 19

250
pz/pcs



- CLIP A DENTINO
- CLOTH CLIP
- CLIPS

5000
pz/pcs



- CLIP A DENTINO 22.3.3
- CLOTH CLIP 22.3.3
- CLIPS PARA PANTALLA/CABLE 22.3.3

2000
pz/pcs



- CLIP PER TUBO $\varnothing 17$
- TUBE CLIP $\varnothing 17$
- CLIP PARA TUBO $\varnothing 17$

2000
pz/pcs



- CLIP PER TUBO $\varnothing 19$
- TUBE CLIP $\varnothing 19$
- CLIP PARA TUBO $\varnothing 19$

2000
pz/pcs



- CLIP PER TUBO $\varnothing 19$ INOX
- TUBE CLIP $\varnothing 19$ INOX
- CLIP PARA TUBO $\varnothing 19$ INOX

100
pz/pcs



PASSA FILO / LEAD EDGE TUBE CLIP / CLIP /

- PASSA FILO S19
- LEAD EDGE TUBE CLIP S19*
- CLIPS PARA CABLE S19



500
pz/pcs



- PASSA FILO L19
- LEAD EDGE TUBE CLIP L19*
- CLIPS PARA CABLE L19

500
pz/pcs



CUSCINETTI / SHAFT SUPPORT / SOPORTE PARA TUBO

- CUSCINETTO 4 K1" corto
- 4 BEARING SHAFT SUPPORT 1" short
- SOPORTE PARA TUBO 1" corto



36
pz/pcs



- CUSCINETTO 4 K2" corto
- 4 BEARING SHAFT SUPPORT 2" short
- SOPORTE PARA TUBO 2" corto

20
pz/pcs



AVVOLGITORI / CABLE DRUM

- AVVOLGITORE TIPO II DA1"
- CABLE DRUM TYPE II 1"
- TAMBOR DE CABLE II 1"



12
pz/pcs



- AVVOLGITORE TIPO III DA1"
- CABLE DRUM TYPE III 1"
- TAMBOR DE CABLE III 1"

12
pz/pcs



- AVVOLGITORE TIPO III DA 2"
- CABLE DRUM TYPE III 2"
- TAMBOR DE CABLE III 2"

12
pz/pcs



CAVI / CABLE

- CAVO ACCIAIO ZINCATO 7x7- 3 mm
- AIRCRAFT CABLE GALVANIZED 7x7- 3 mm
- CABLE DE ACERO GALVANIZADO 7x7- 3 mm



1000
m



- CAVO ACCIAIO RICOPERTO 1x7 -1,7-2,5mm
- AIRCRAFT CABLE 1x7-2,5mm
- CABLE DE ACERO RECUBIERTOS 1x7 -1,7-2,5mm

1000
m



- CAVETTO IN POLIESTERE TRASPARENTE 2,2mm
- POLY WIRE TRANSPARENT 2,2mm
- CABLE EN POLIESTERE 2,2mm

1800
m



VARIE / VARIOUS / VARIOS



- CONNETTORI SNODATI PER TUBO Ø19
- LEAD EDGE ELBOW FITS Ø19
- CONECTORES DOBLADOS Ø19

250
pz/pcs



- CONNETTORI PER TUBO Ø19S
- LEAD EDGE CONNECTOR Ø19S
- CONEXIONES PARA TUBO Ø19S

250
pz/pcs



- TUBO QUADRO, ZINCATO 50x50x6400 mm
- SQUARE TUBE, GALVANIZED 50x50x6400 mm
- PERFIL QUADRO GALVANIZADO 50x50x6400 mm

25
pz/pcs



- CONNETTORE PER TUBO QUADRO 50x50
- SQUARE TUBE CONNECTOR 50x50
- CONEXIONES PARA TUBO QUADRO 50x50

15
pz/pcs



- TIRAFILO
- WIRE-TIGHTENER, GALVANIZED
- TENSOR DE CABLE GALVANIZADO

100
pz/pcs

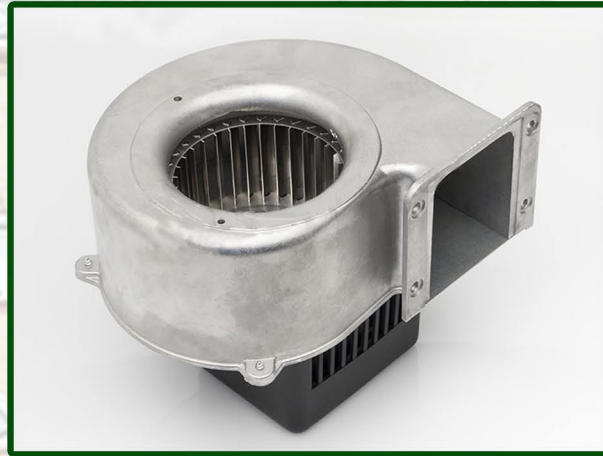


- RACCORDO PER TUBO DA 1"
- TUBE CONNECTORS HALVS 1"
- CONEXIONES EXTERIOR PARA TUBO DA 1"

50 pz/pcs
25 sets



MOTORI PER GONFIAGGIO E ACCESSORI / INFLATING MOTORS AND ACCESSORIES / MOTORES INFLADORES



**MEMBRANA "NON RITORNO"
FLAP "ONE WAY"
MEMBRANA "STOP"**



**TUBO FLESSIBILE
FLEXIBLE AIR TUBE
MANGUERA FLEXIBLE**



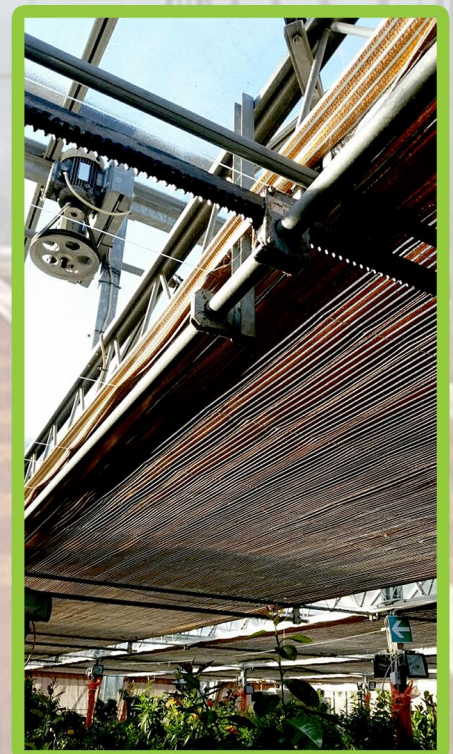
**VALVOLA DI GONFIAGGIO
AIR TRANSFER GASKET
VALVOLA INFLADORES**



**FASCETTA DI BLOCCAGGIO
PLASTIC COLLAR
ABRAZADERA PARA MANGUERA**



APPLICAZIONI / APPLICATIONS / APLICACIONES





VIALE SISTEMI group



VIALE SISTEMI SRL

Via del Piano, 72
18018 Taggia - IM
ITALY
TEL: +39 0184 476420;

national sales office: s.viale@vialesistemi.com
export office: info@vialesistemi.com
technical dept.: m.digitali@vialesistemi.com
shipping support: logistica@vialesistemi.com



AGROSISTEMAS VIALE S DE RL DE CV

Carr. Calpulalpan-Texcoco Km 23,6
Co. Xala; 56217 Texcoco,
Edo. De Mexico
MEXICO
TEL: +52 55 13209353

jorgecigarroa@vialesistemi.com
artemisaalopez@vialesistemi.com



VIALE SISTEMI East Europe sp. z o.o

UL. DRZYMALY 135A
41-407 IMIELIN
POLAND
TEL: +48 606 385 832
easteurope@vialesistemi.com

easteurope@vialesistemi.com

follow us  [Viale Sistemi Srl](#)

DISTRIBUTORS / DEALERS

Quality System Certificate



0868/5



IT-3943