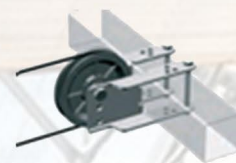


# CARRUCOLA / PULLEY / POLEA



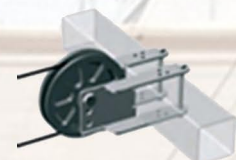
- CARRUCOLA PER CAVO 90UF con staffa 50x50
- CABLE PULLEY 90UF bracket 50x50
- POLEA PARA CABLE con placa 90UF 50x50

25  
pz/pcs



- CARRUCOLA PER CAVO 100UF con staffa 50x50
- CABLE PULLEY 100UF bracket 50x50
- POLEA PARA CABLE con placa 100UF 50x50

25  
pz/pcs



- CARRUCOLINE CON GANCIO 40
- PULLEY WITH HOOK 40
- POLEA CON GANCIO 40

100  
pz/pcs



## CLIPS



- CLIPS ALLUMINIO  $\varnothing 19$  + CLIP ALLUMINIO TRAZIONE 26 mm
- ALUMINIUM CLAMP SET
- CLIPS ALUMINIO  $\varnothing 19$  + CLIP ALUMINIO TRACCION 26 mm

100  
pz/pcs



- CLIP EXT PER TRAZIONE A CAVO 19
- LEAD EDGE CABLE CLIP 19 EXT. VERSION
- CLIP PARA TRACCION CABLE 19

250  
pz/pcs



- CLIP A DENTINO
- CLOTH CLIP
- CLIPS

5000  
pz/pcs



- CLIP A DENTINO 22.3.3
- CLOTH CLIP 22.3.3
- CLIPS PARA PANTALLA/CABLE 22.3.3

2000  
pz/pcs



- CLIP PER TUBO  $\varnothing 17$
- TUBE CLIP  $\varnothing 17$
- CLIP PARA TUBO  $\varnothing 17$

2000  
pz/pcs



- CLIP PER TUBO  $\varnothing 19$
- TUBE CLIP  $\varnothing 19$
- CLIP PARA TUBO  $\varnothing 19$

2000  
pz/pcs



- CLIP PER TUBO  $\varnothing 19$  INOX
- TUBE CLIP  $\varnothing 19$  INOX
- CLIP PARA TUBO  $\varnothing 19$  INOX

100  
pz/pcs



# PASSA FILO / LEAD EDGE TUBE CLIP / CLIP /

- PASSA FILO S19
- LEAD EDGE TUBE CLIP S19\*
- CLIPS PARA CABLE S19



500  
pz/pcs



- PASSA FILO L19
- LEAD EDGE TUBE CLIP L19\*
- CLIPS PARA CABLE L19

500  
pz/pcs



# CUSCINETTI / SHAFT SUPPORT / SOPORTE PARA TUBO

- CUSCINETTO 4 K1" corto
- 4 BEARING SHAFT SUPPORT 1" short
- SOPORTE PARA TUBO 1" corto



36  
pz/pcs



- CUSCINETTO 4 K2" corto
- 4 BEARING SHAFT SUPPORT 2" short
- SOPORTE PARA TUBO 2" corto

20  
pz/pcs



# AVVOLGITORI / CABLE DRUM

- AVVOLGITORE TIPO II DA1"
- CABLE DRUM TYPE II 1"
- TAMBOR DE CABLE II 1"



12  
pz/pcs



- AVVOLGITORE TIPO III DA1"
- CABLE DRUM TYPE III 1"
- TAMBOR DE CABLE III 1"

12  
pz/pcs



- AVVOLGITORE TIPO III DA 2"
- CABLE DRUM TYPE III 2"
- TAMBOR DE CABLE III 2"

12  
pz/pcs



# CAVI / CABLE

- CAVO ACCIAIO ZINCATO 7x7- 3 mm
- AIRCRAFT CABLE GALVANIZED 7x7- 3 mm
- CABLE DE ACERO GALVANIZADO 7x7- 3 mm

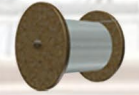


1000  
m



- CAVO ACCIAIO RICOPERTO 1x7 -1,7-2,5mm
- AIRCRAFT CABLE 1x7-2,5mm
- CABLE DE ACERO RECUBIERTOS 1x7 -1,7-2,5mm

1000  
m



- CAVETTO IN POLIESTERE TRASPARENTE 2,2mm
- POLY WIRE TRASPARENT 2,2mm
- CABLE EN POLIESTERE 2,2mm

1800  
m



# VARIE / VARIOUS / VARIOS



- CONNETTORI SNODATI PER TUBO Ø19
- LEAD EDGE ELBOW FITS Ø19
- CONECTORES DOBLADOS Ø19

250  
pz/pcs



- CONNETTORI PER TUBO Ø19S
- LEAD EDGE CONNECTOR Ø19S
- CONEXIONES PARA TUBO Ø19S

250  
pz/pcs



- TUBO QUADRO, ZINCATO 50x50x6400 mm
- SQUARE TUBE, GALVANIZED 50x50x6400 mm
- PERFIL QUADRO GALVANIZADO 50x50x6400 mm

25  
pz/pcs



- CONNETTORE PER TUBO QUADRO 50x50
- SQUARE TUBE CONNECTOR 50x50
- CONEXIONES PARA TUBO QUADRO 50x50

15  
pz/pcs



- TIRAFILO
- WIRE-TIGHTENER, GALVANIZED
- TENSOR DE CABLE GALVANIZADO

100  
pz/pcs

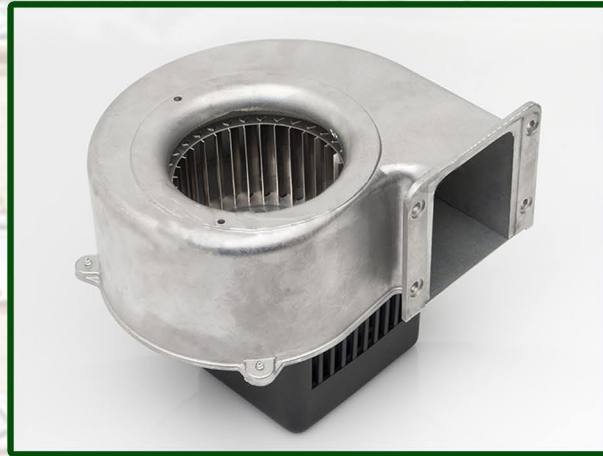


- RACCORDO PER TUBO DA 1"
- TUBE CONNECTORS HALVS 1"
- CONEXIONES EXTERIOR PARA TUBO DA 1"

50 pz/pcs  
25 sets



# MOTORI PER GONFIAGGIO E ACCESSORI / INFLATING MOTORS AND ACCESSORIES / MOTORES INFLADORES



**MEMBRANA "NON RITORNO"  
FLAP "ONE WAY"  
MEMBRANA "STOP"**



**TUBO FLESSIBILE  
FLEXIBLE AIR TUBE  
MANGUERA FLEXIBLE**



**VALVOLA DI GONFIAGGIO  
AIR TRANSFER GASKET  
VALVOLA INFLADORES**



**FASCETTA DI BLOCCAGGIO  
PLASTIC COLLAR  
ABRAZADERA PARA MANGUERA**