

GEARMOTORS SERIES PR4

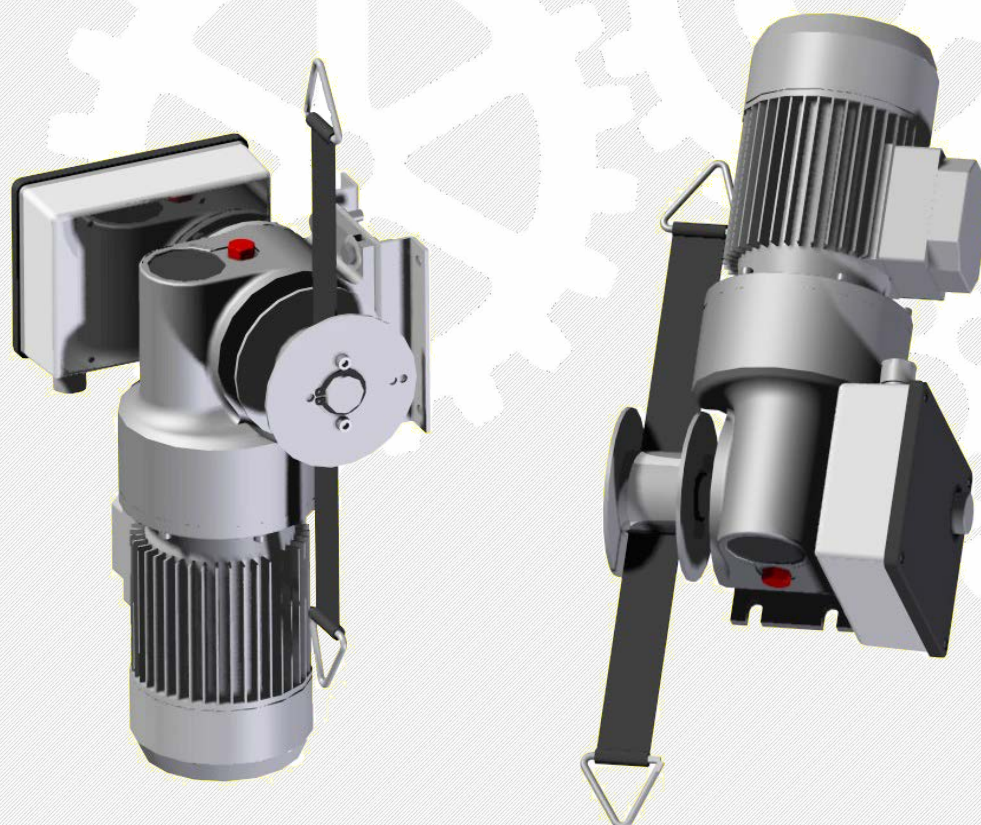


Last born of the PR family, it is ideal when shaft's low velocity is needed; for use applied to tilting windows, "up and down" windows or pulley hoisting. Speed 1.2 RPM.

The gearmotor is furnished with a hex socket screw that allows the manual use of the unit, in case of blackout, with a battery-operated screwdriver (placed in the cooling fan of the motor).

The gearbox is in sandblasted aluminium cage and its component are mounted on bearings.

The equipped standard motors work with 50-60 Hz frequency, can be supplied with the UL/CSA Certification and/or in single-phase power with double capacitor or circuit breaker for a higher starting current. The gearmotor is supplied with stainless steel direct shaft of Ø27 stainless-steel shaft in various solutions: with direct connection to the roll-up tube, with double chain coupling, or with present connections for single, double or strap pulleys. It comes complete with a limit switch with double safety micro-sensor to avoid phase reversal. Setting gears inside the casing. On request, the limit switch can be supplied with potentiometer. On customer's demand, the limit switch can be set to operate at 21-42 shaft revolutions per minute (higher RPM on demand). Its compact design and size make it fit for any type of structure.



PR4

The electric motors used by Viale Sistemi comply with CE regulations and are considered duty Type S3 - 70% (intermittent periodic duty) in compliance with the classification of new Std. IEC 60034-1.

CODE/PRODUCT	3 Ph - 50 Hz / 60 Hz					
	kW	A	V	RPM	Nm	kg
PR4*1435-.....	0.25	0.9	230-440	1.2	280	14

CODE/PRODUCT	1 Ph - 50 Hz					
	kW	A	V	RPM	Nm	kg
PR4*1450-.....	0.37	3.9	230	1.2	280	15