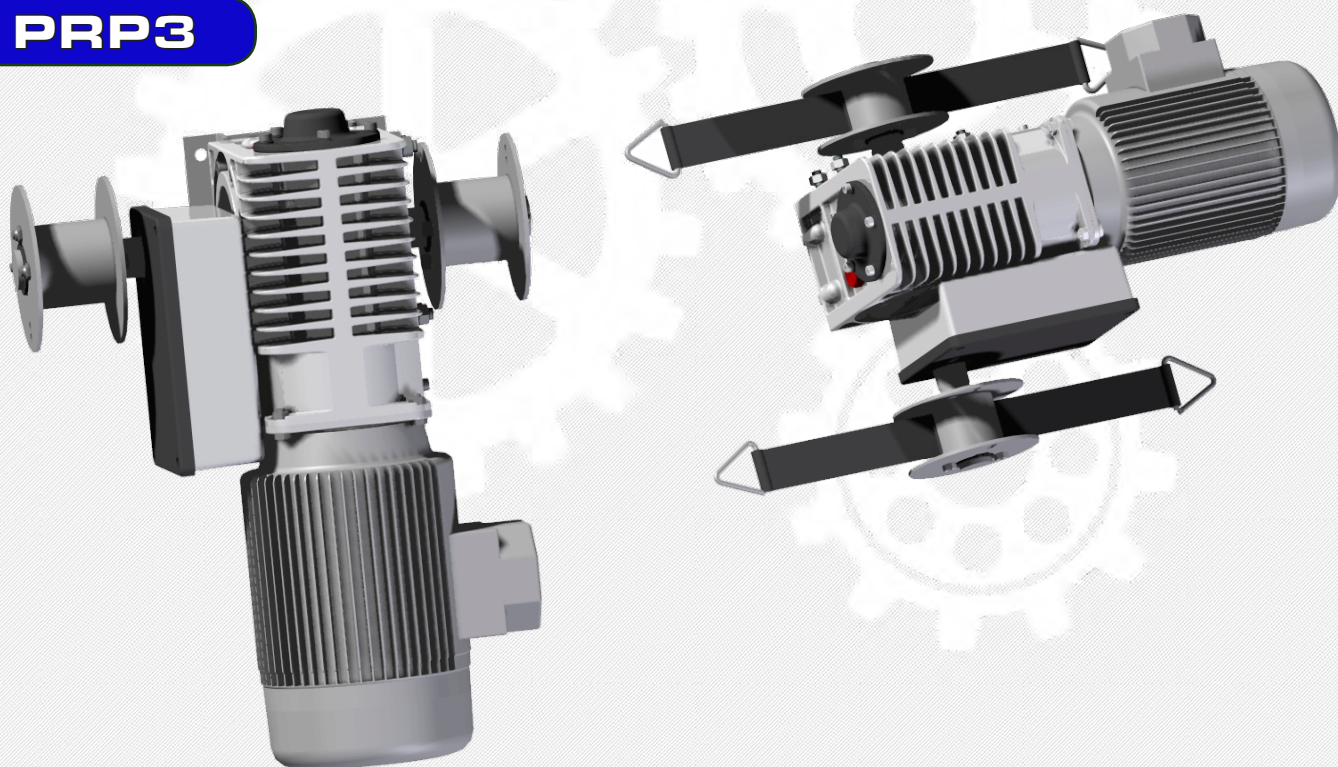


GEAR MOTOR SERIES PRP3



This model is devised for side opening with rack system in small/medium structures . The gearbox can be supplied with the mounting plate and pulley (single or double) for wall or ceiling setting. The gear motor comes with a $\varnothing 27$ stainless-steel shaft either with direct connection to the roll-up tube, or with a double chain coupling. It is supplied with a limit switch with double safety micro-sensor to avoid phase reversal. The limit switch can be regulated externally and, on request, it can be supplied with potentiometer. On customer's demand, the equipped limit switch can operate at 15-30-45 shaft revolutions per minute. The gearbox is in sandblasted aluminium box and its components are mounted on bearings. The gear motor is furnished with a hex socket screw that allows the manual use of the unit, in case of blackout, with a battery-operated screwdriver. The equipped standard motors work with 50-60 Hz frequency, can be supplied with the UL/CSA Certification and/or in single-phase power with double capacitor or circuit breaker for a higher starting current.

PRP3



The electric motors used by Viale Sistemi comply with CE regulations and are considered duty Type S3 - 70% (intermittent periodic duty) in compliance with the classification of new Std. IEC 60034-1.

CODE/PRODUCT	3 Ph - 50 Hz / 60 Hz					
	kW	A	V	RPM	Nm	kg
PRP3-1435-.....	0.25	0.9	230-440	3	280	14

CODE/PRODUCT	1 Ph - 50 Hz					
	kW	A	V	RPM	Nm	kg
PRP3-1450-.....	0.37	3.9	230	3	280	15